

Instructions for Supplied Artwork

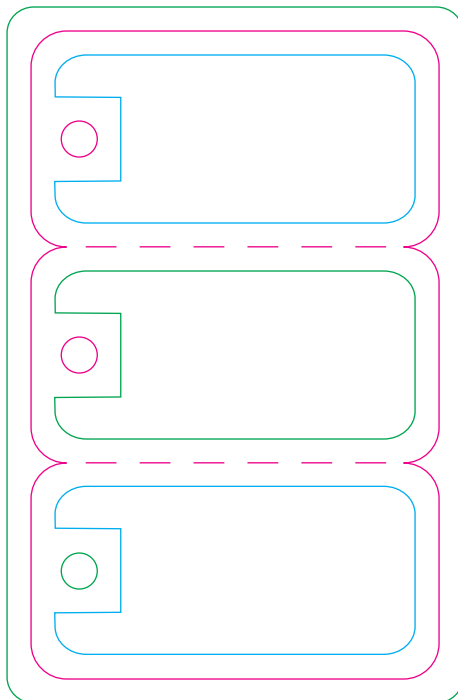
KEY TAG CARDS

- It is preferable to use enriched black (C: 65 % – M: 65 % – Y: 65 % – K: 100 %) to guarantee the opacity of the black. **This only applies to large surfaces.** Texts must remain 100 % black only.
- Images must have a **minimum** resolution of 300 ppi. Provide all linked images files or embed the images.
- Texts must be converted to curves of fonts must be provided.

SIZE

1 card: 2.125" X 1.125"
3 cards : 2.125" X 3.375"

FRONT



BACK

